

# Hectares BC

## LC Query Design

### **Prepared For**

Matt Austin  
Project Manager

### **Prepared By**

Refractions Research Inc.  
#300 – 1207 Douglas Street  
Victoria, BC  
[www.refractions.net](http://www.refractions.net)

### **Document Tracking**

Version: 2  
Last Updated: Sept 06, 2007



## REVISION HISTORY

---

<b>Date</b>	<b>Version</b>	<b>Author</b>	<b>Description of Changes</b>
Sept 1, 2007	1	Emily Gouge (Refractions Research)	First draft

# CONTENTS

---

## Table of Contents

1Land Characterization Query Definition Window.....	1
1.1Option 1.....	1
1.2Option 2.....	1

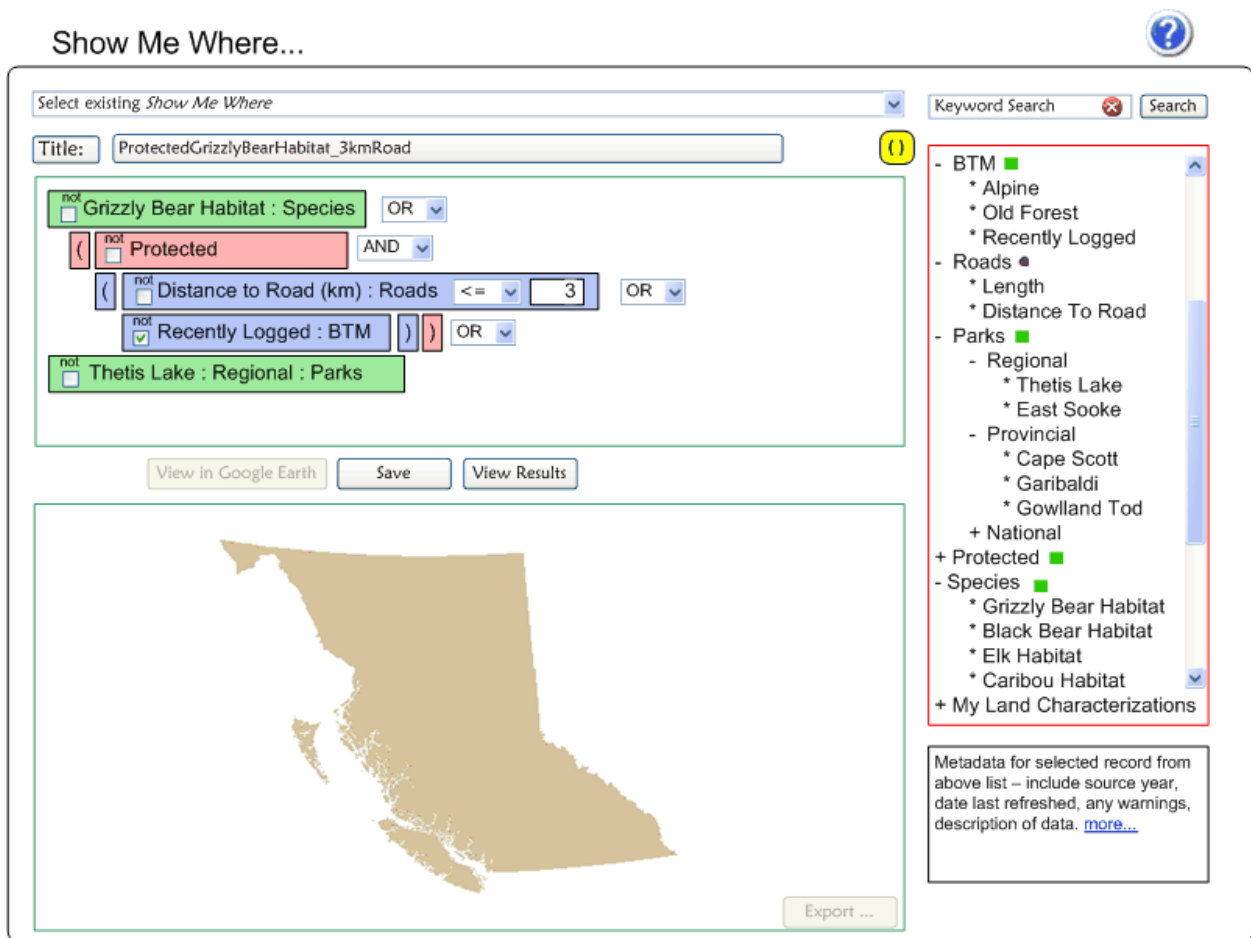
## Table of Figures

Figure 1: LC Dentition Option 1.....	1
Figure 2: LC Dentition Option 2.....	2

# 1 LAND CHARACTERIZATION QUERY DEFINITION WINDOW

The following two sections outline possible options for the land characterization definition window.

## 1.1 OPTION 1



## 1.2 OPTION 2

Show Me Where... ?

Select existing *Show Me Where* Keyword Search  Search


Title: ProtectedGrizzlyBearHabitat\_3kmRoad Not ( )

Grizzly Bear Habitat : Species OR ( Protected AND (

Distance to Road (km) : Roads <= 3 OR Not Recently Logged : BTM

) ) OR ( Thetis Lake : Regional : Parks )

View in Google Earth Save View Results



Export ...

- BTM ■
  - \* Alpine
  - \* Old Forest
  - \* Recently Logged
- Roads ●
  - \* Length
  - \* Distance To Road
- Parks ■
  - Regional
    - \* Thetis Lake
    - \* East Sooke
  - Provincial
    - \* Cape Scott
    - \* Garibaldi
    - \* Gowlland Tod
  - + National
- + Protected ■
- Species ■
  - \* Grizzly Bear Habitat
  - \* Black Bear Habitat
  - \* Elk Habitat
  - \* Caribou Habitat
- + My Land Characterizations

Metadata for selected record from above list – include source year, date last refreshed, any warnings, description of data. [more...](#)

Figure 2: LC Dentition Option 2